

# Session 2: Africa-BB-Maps in Kenya: Objectives, Technical Framework, Timeline

Moderation: Mr. Dana Jon Kamason, Project Manager, Africa-BB-Maps, ITU



# Session 2: Africa-BB-Maps in Kenya: objectives, Technical Framework, Timeline



**Mr. Dana Jon Kamason**

Project Manager, Africa-BB-Maps, ITU



# Africa-BB-Maps – Project's Objective in Kenya



COMMUNICATIONS  
AUTHORITY OF KENYA



# Africa-BB-Maps - 3 Strategic Pillars for Kenya



Africa-BB-Maps

## Policy & Regulations



### Creating the enabling environment for broadband mapping to thrive:

- Governance frameworks aligned with EU best practices
- Policy and regulatory integration
- Common data standards and interoperability
- Monitoring and evaluation mechanisms

## Technology



### Delivering state-of-the-art mapping platform:

- Geospatial platform (proprietary, open-source, or hybrid)
- Integration of data from various sources
- Geoportals for public access and planning
- Tools for network analysis and policy formulation

## Capacity Development



### Empowering people and institutions to lead:

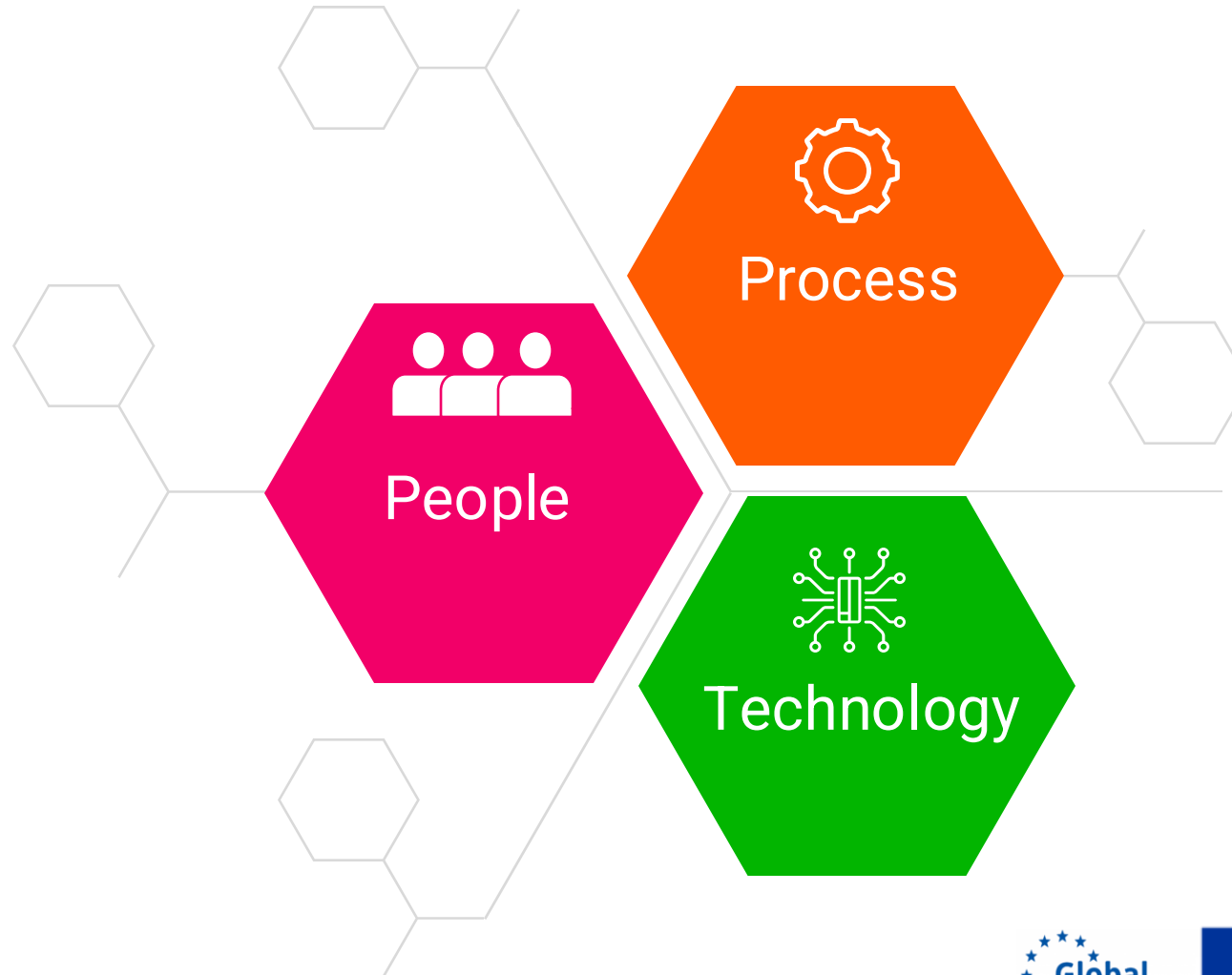
- Structured training through ITU Academy
- Hands-on learning in GIS, broadband policy, and data governance
- Support for CA and stakeholders
- Kenya-EU collaboration and regional knowledge exchange

## National Ownership for Sustainability



# Africa-BB-Maps – Technical Framework for Kenya

People, Process, and Technology for Sustainable Broadband Mapping



# Africa-BB-Maps - Expected Outcome for Kenya

## Low

01

**Status:** No system, no capacity, no coordination.

**Focus:** Raise awareness and assess digital readiness.

## Medium (Emerging)

02

**Status:** Foundations forming, but data and systems are minimal.

**Focus:** Build mandates, standards, and system blueprint.

## Medium (Functional)

03

**Status:** Basic system running with limited features and data.

**Focus:** Deploy core components and train initial users.

## High (Established)

04

**Status:** Operational system integrated into national planning.

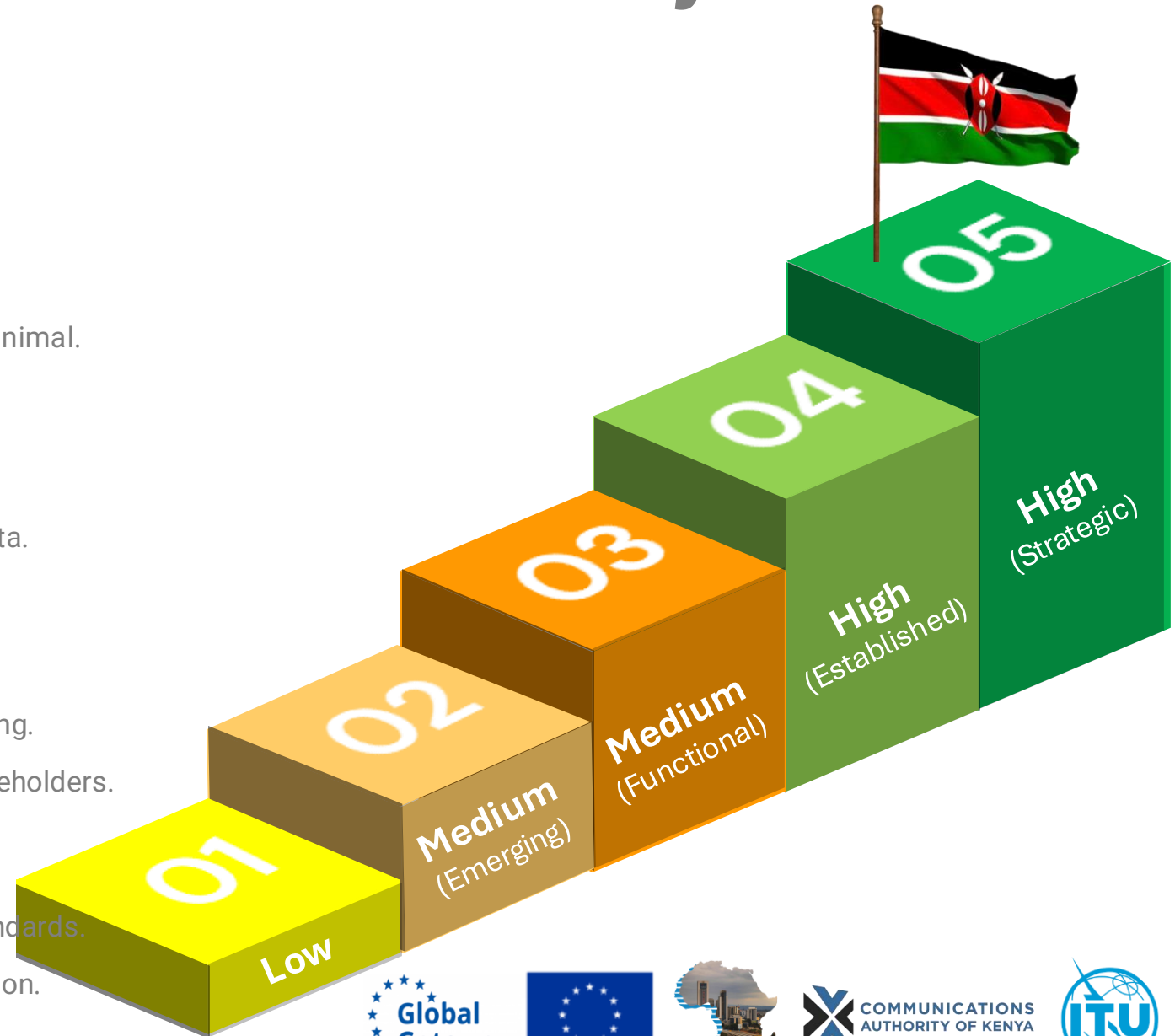
**Focus:** Institutionalise platform and scale use across stakeholders.

## High (Strategic)

05

**Status:** Strategic tool aligned with regional and global standards.

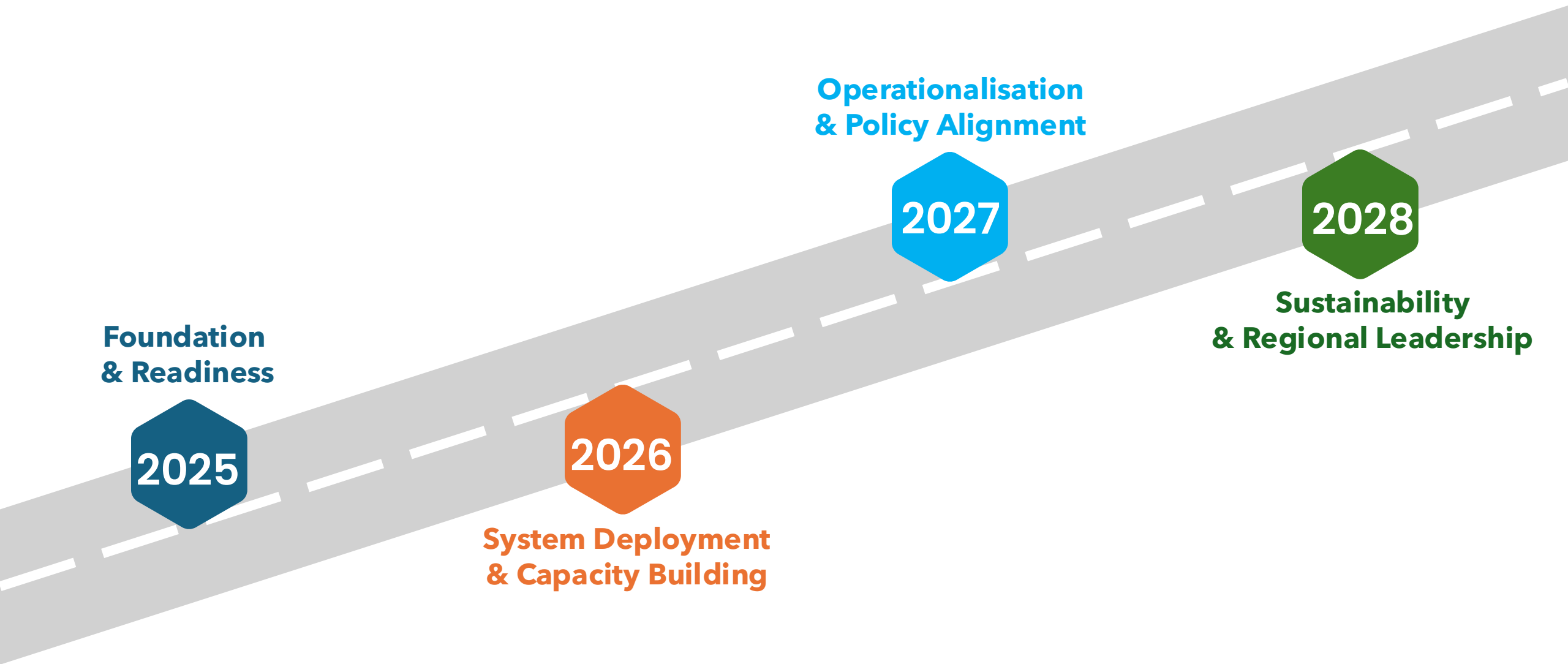
**Focus:** Drive decision-making, enable regional harmonisation.



COMMUNICATIONS  
AUTHORITY OF KENYA



# Africa-BB-Maps - Roadmap for Kenya



COMMUNICATIONS  
AUTHORITY OF KENYA



# Thank You!





# Session 2: Africa-BB-Maps in Kenya: Policy analysis high-level overview



**Mr. Elind Sulmina**

Project Officer, Africa-BB-Maps, ITU



# Policy Work in Kenya

Africa-BB-Maps aims to help establish or strengthen broadband mapping systems within national regulatory agencies, ensuring they have the technical, policy, and institutional capacity to operate them effectively.

We aim for a state of the art GIS tool capable of planning better ICT Infrastructure investments, close connectivity gaps, and align with harmonized regional practices.

Policy Goal: Strengthen enabling environments for broadband mapping to fully operate without policy and regulatory constraints

## Outputs:

- 1.2 Policy analysis & guidelines at country level
- 1.3 Increased policy dialogue & awareness at national/regional



# Pillars of Policy Work

The Africa-BB-Maps policy component rests on three interconnected pillars that guide all country interventions.

1. Conduct Baseline Assessment & Needs Analysis – Targeted review of the broadband mapping ecosystem to identify gaps and fine-tune approaches.
2. Provide Targeted Recommendations – Strengthen legal and regulatory frameworks and optimize technical systems.
3. Policy Dialogue & Awareness – Build understanding, stakeholder alignment, and regional harmonization.



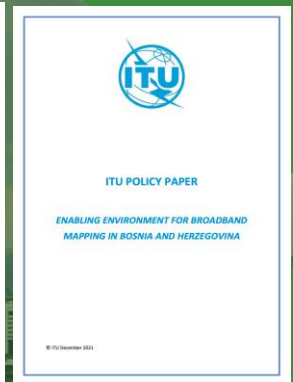
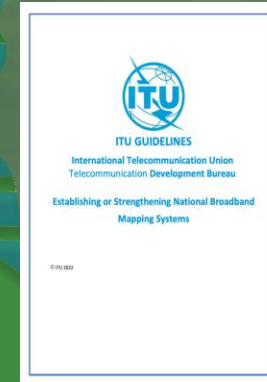
The Photo by PhotoAuthor is licensed under CCYSA.



# Regulatory Practices & Frameworks

Drawing from global best practices, such as ITU and the EU

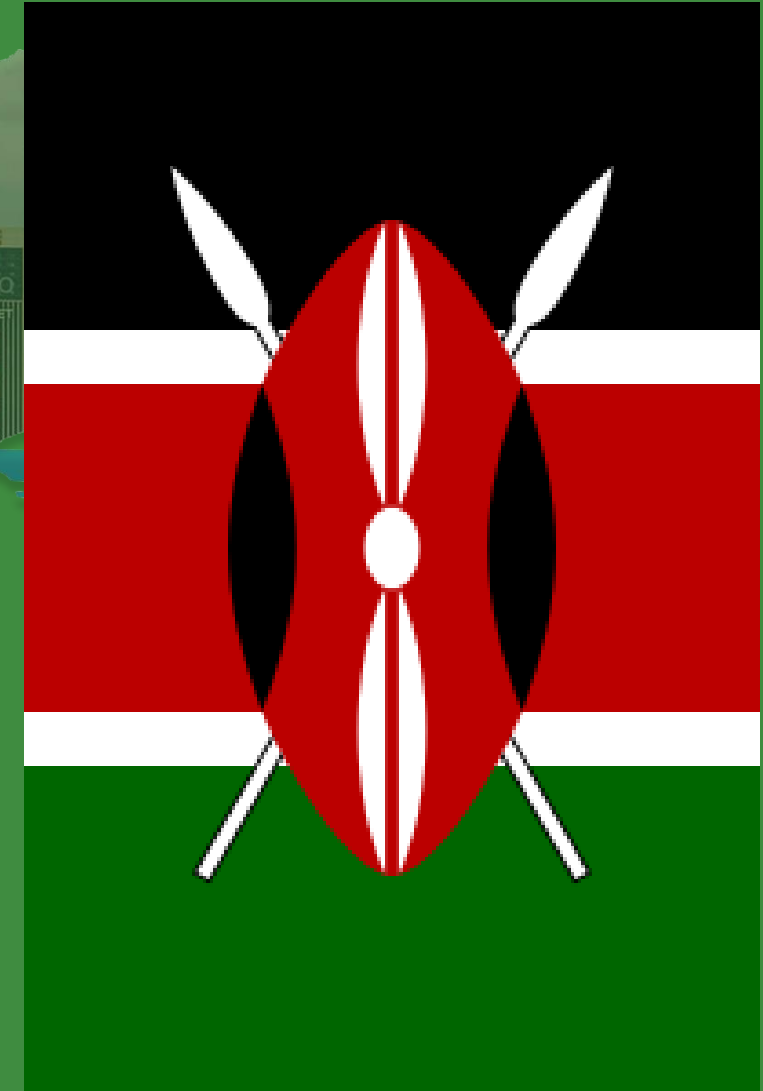
1. ITU Guidelines Establishing or Strengthening National Broadband
2. ITU Policy analysis report on establishing or strengthening the enabling environment for broadband mapping systems
3. ITU Compendium of Case Studies on Broadband Mapping Systems Across the EMERG and EaPeReg Regions Mapping Systems
4. EU State Aid Guidelines (2023)
5. European Electronic Communications Code (2018)



# Policy Promotion & Advocacy

Policy dialogue is essential to ensure that broadband mapping is understood, supported, and integrated into national digital strategies. Africa-BB-Maps works with governments, regulators, and industry to raise awareness and promote harmonization.

- National and regional workshops
- Engagement with ministries, regulators, and private sector
- Advocacy for harmonized mapping approaches
- Sharing regional & global best practices
- Building stakeholder buy-in for mapping adoption



ThePhoto by PhotoAuthor is licensed under CCYSA.

# Expected Policy Outcomes



COMMUNICATIONS  
AUTHORITY OF KENYA

1. Stronger policy coherence with regional best practices
2. Broadband mapping embedded in national ICT strategies
3. Transparent, reliable data for investment and planning decisions
4. Enhanced capacity of institutions to manage mapping systems
5. Contribution to regional harmonization and cross-border connectivity



# Thank you!

Any question?



# RECAP of Day 1 and Objectives of Day 2

Dr. Emma Otieno, CA



COMMUNICATIONS  
AUTHORITY OF KENYA





# Dinner

18:30 – 21:30

