

# DAY 3: Stakeholder Coordination & Roadmap Development

7 August 2025, 9:00



# RECAP: Recap of Day 2 and Objectives of Day 3

**Dr. Mohammed S Yusuf**

Legal Department, NCC



# SESSION 6: Policy Deep-Dive: Presentation of upcoming policy analysis work

**Moderation:** Mr. Elind Sulmina, Project Officer, Africa-BB-Maps, ITU



# SESSION 6: Policy Deep-Dive: Presentation of upcoming policy analysis work

**Dr. Mohammed S Yusuf**

Legal Department, NCC

**Ms. Agnieszka Gladysz**

ITU Speaker, Poland

**Ms. Joanna Antczak**

ITU Speaker, Poland

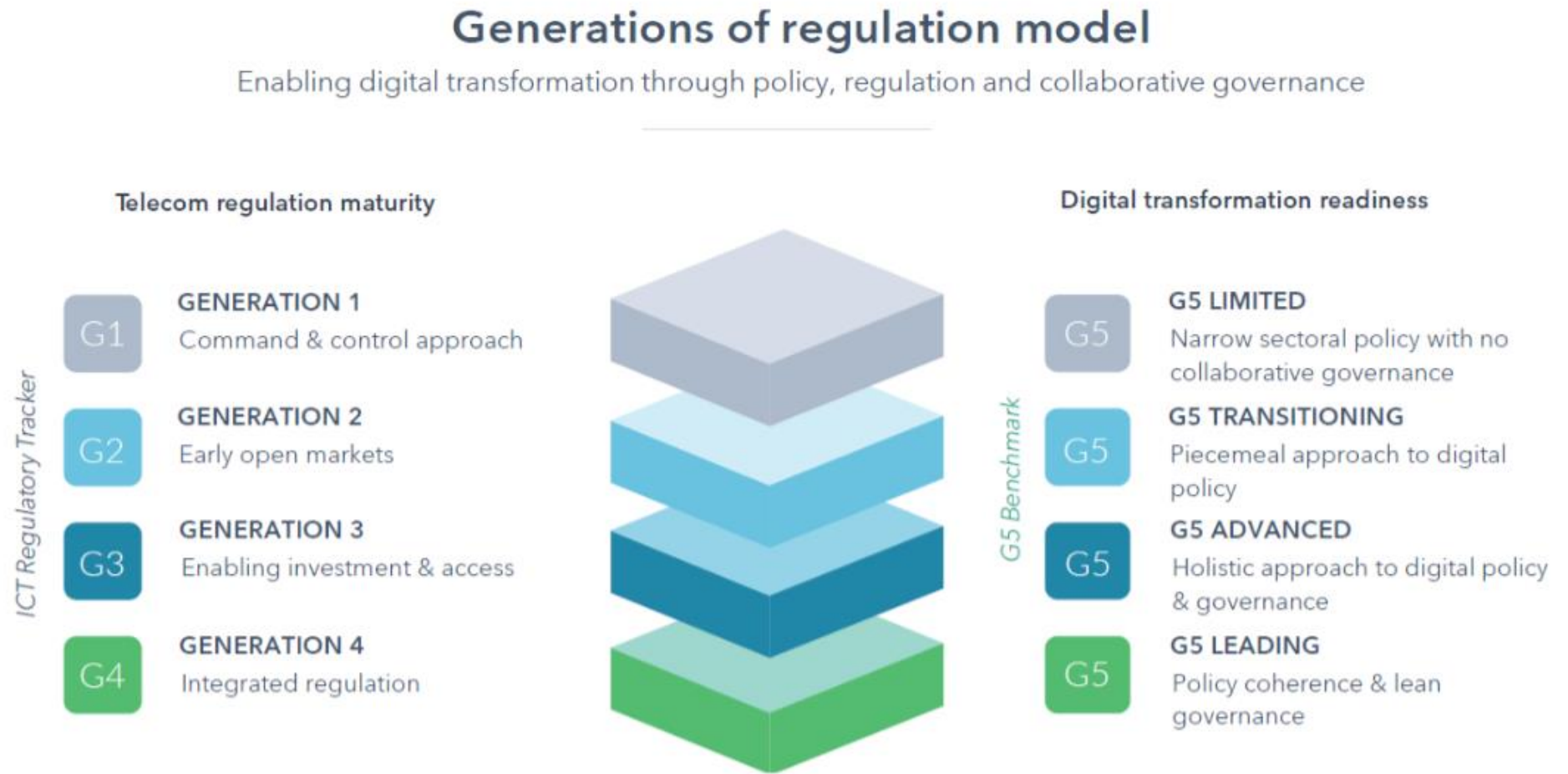
**Mr. Vladimir Dukovic**

ITU Speaker, Croatia



# ITU ICT Regulatory Tracker

- To help analyze the evolution of ICT regulation worldwide, identify and measure progress areas, the countries included in the Tracker are split into score thresholds that relate to generations of regulation.



# ITU ICT Regulatory Tracker

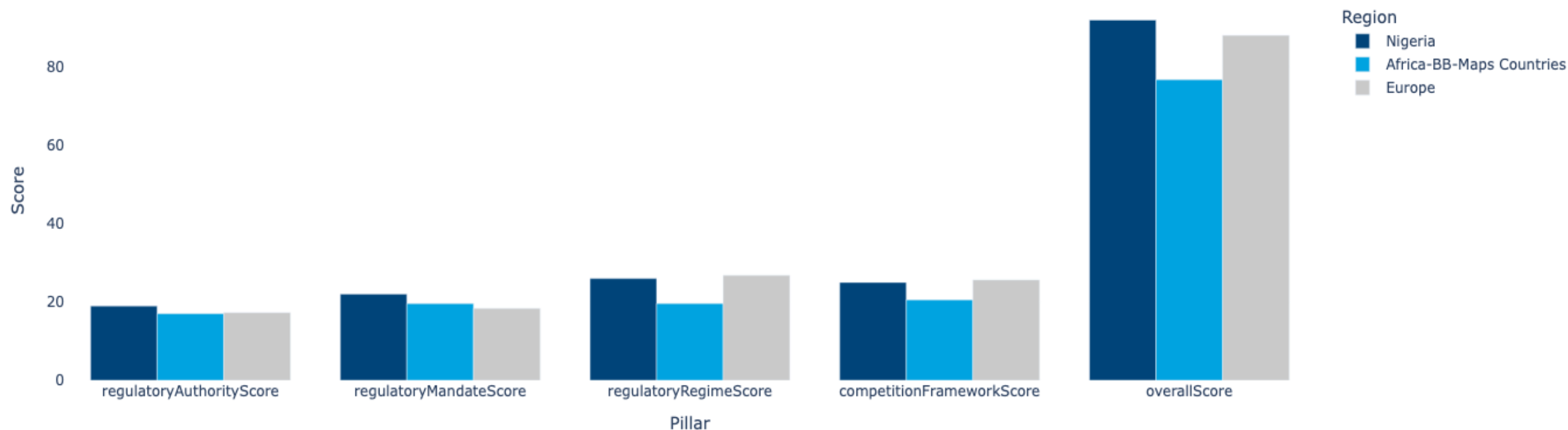
- The tracker records the existence and features of regulatory frameworks in 194 countries between 2007 and 2024.
- It is organized in 4 pillars.

## ICT Regulatory Tracker structure and scoring rules

Pillar	Name	Number of indicators	Max score	Countries ranked if min indicators
1	Regulatory authority	10	20	10
2	Regulatory mandates	11	22	11
3	Regulatory regime	15	30	15
4	Competition framework	14	28	14
	ICT Regulatory Tracker	50	100	50

Source: ITU

# Nigeria

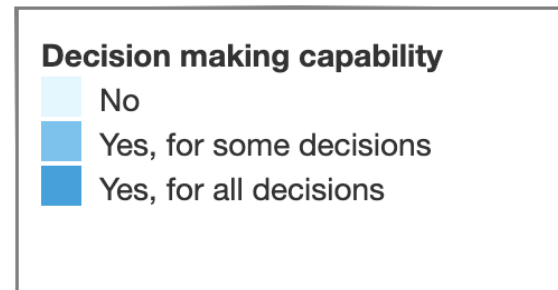


The ICT Regulatory tracker shows good maturity in Nigeria throughout all 4 pillars compared to other Africa-BB-Maps countries and Europe, with an emphasis on regulatory regime and competition framework.

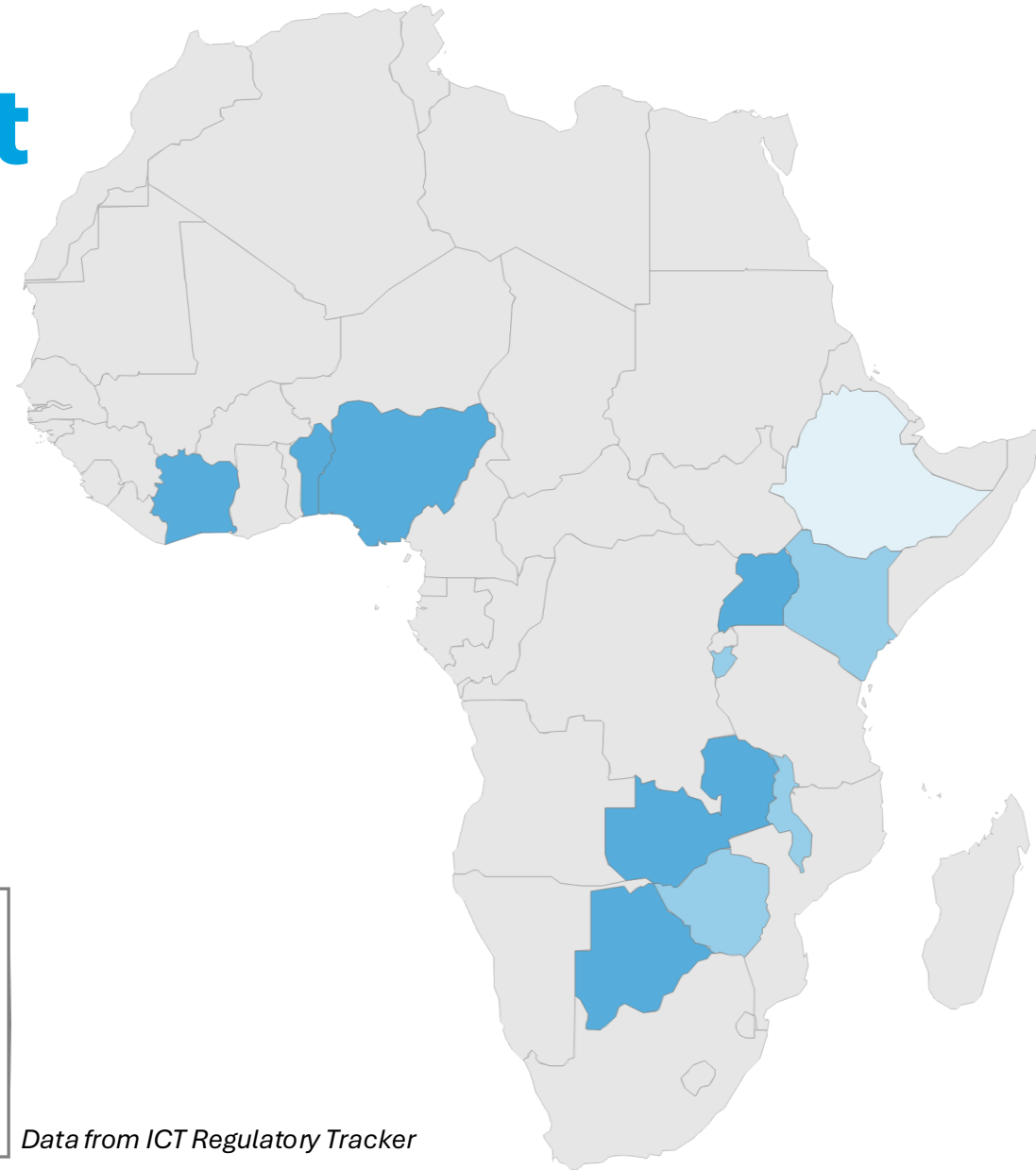
# Regulatory environment

- Nigeria has a strong autonomous regulatory agency
- The question is:

what legal tools does this agency have to push forward the implementation of a broadband mapping project ?



*Data from ICT Regulatory Tracker*





# Africa-BB-Maps Policy Work in Nigeria

The Africa-BB-Maps policy work aims to collaborate closely with NCC and develop together proposed recommendations to strengthen its policy and regulatory mandate, enabling national and long-term ownership and use of a state-of-the-art broadband mapping system.

**Goal:** Strengthen enabling environments for broadband mapping in Nigeria

## Outputs:

- **1.2** Policy analysis & guidelines at country level
- **1.3** Increased policy dialogue & awareness at national/regional levels

## Approach:

- Country-specific assessments
- Promotion of best practices
- Regional harmonization



# Nigeria's Policy Analysis & Regulatory Assessment



Africa-BB-Maps will conduct a detailed policy and regulatory review will identify gaps and opportunities in Nigeria's broadband mapping ecosystem anchoring it under a cross-sector body of knowledge of ITU (T,R,D). It will base its work on existing national laws and regional west African laws.

This process looks at national strategies, legislation, and institutional roles to design recommendations aligned with Nigeria's development priorities and global benchmarks.

- Baseline assessment & maturity matrix --> Done
- Review of legal, regulatory, and policy frameworks
- Identification of barriers & governance challenges
- Development of country-specific guidelines
- Alignment with international standards

# Questionnaire of the Regional Event

Question	Answer
Does your country have government initiatives or public policies related to broadband mapping?	Yes, with a structured plan and budget
What is the main objective of your broadband expansion strategy?	Development of mobile broadband (3G/4G/5G), Extension of fiber optic broadband
Does your country have specific broadband penetration targets for the next five years?	Yes, for both urban and rural areas
Does your country have a broadband mapping system?	We collect and develop internal maps, but they do not constitute a true broadband mapping system



# Regulatory Practices & Frameworks proposed for Nigeria

Drawing from global best practices, such as ITU and the EU :

1. ITU Guidelines Establishing or Strengthening National Broadband Mapping Systems
2. ITU Policy analysis report on establishing or strengthening the enabling environment for broadband mapping systems
3. ITU Compendium of Case Studies on Broadband Mapping Systems Across the EMERG and EaPeReg Regions Mapping Systems
4. EU State Aid Guidelines (2023)
5. Broadband Cost Reduction Directive (2014)
6. European Electronic Communications Code (2018)



# Policy Promotion & Advocacy in Nigeria

For broadband mapping to be effective, it must be embraced by decision-makers and implemented in a coordinated manner. Africa-BB-Maps will engage with all stakeholders together with NCC to build awareness that technology deployment must go hand in hand with policy deployment

- National and regional workshops
- Engagement with ministries, regulators, and private sector
- Advocacy for harmonized mapping approaches
- Sharing regional & global best practices
- Building stakeholder buy-in for mapping adoption



# Expected Policy Outcomes for Nigeria



Through these actions, Africa-BB-Maps aims to

1. Stronger policy coherence with regional best practices
2. Broadband mapping embedded in national ICT strategies
3. Transparent, reliable data for investment and planning decisions
4. Enhanced capacity of Nigerian institutions to manage mapping systems
5. Contribution to regional harmonization and cross-border connectivity

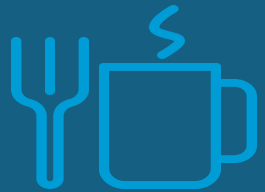
# Q&A and Discussion for Session 6

Estimated end time: 10:45



# Coffee Break

10:45 – 11:00





# SESSION 7: Group discussions on the policy and regulatory work

**Moderation:** Mr. Elind Sulmina, Project Officer, ITU Africa-BB-Maps



# SESSION 7: Group discussions on the policy and regulatory work

Each group should focus on

- ☐ Internal, legal or policy barriers;
- ☐ Coordination challenges between data providers and NCC
- ☐ Data ownership and confidentiality
- ☐ Institutional limitations
- ☐ National & Regional harmonization



# LUNCH BREAK

12:30 – 13:30



# SESSION 8: Whole-of-Government Coordination for Broadband infrastructure: Cross-Sector Synergies, Data Sharing & Protection mechanisms – endorsement section and phase

**Dr. Umar S. Abdullahi**, Special Adviser Technical to EVC, NCC



# Q&A and Discussion for Session 8

Estimated end time: 14:30



# SESSION 9: Finalisation of the Stakeholder Mapping – Roles & Responsibilities

Moderation: Mr. Dana Jon Kamason, Project Manager, Africa-BB-Maps, ITU



# SESSION 9: National Stakeholder Mapping – Roles & Responsibilities



**Dana Jon Kamason**

Project Manager, Africa-BB-Maps, ITU



**Dr. Umar S. Abdullahi**

Special Adviser Technical to EVC, NCC

# Africa-BB-Maps – GIS/Broadband Mapping Roles

## Primary Custodian & Operation Lead

Institution or entity accountable for the full operation, maintenance, and upgrade of the national broadband mapping platform.

Responsibilities	Actors
<ul style="list-style-type: none"><li>• Ensure Continuity</li><li>• Host and maintain broadband mapping system</li><li>• Enforce data reporting obligations from data contributors</li><li>• Coordinate with other national stakeholders on data sharing and governance</li></ul>	



# Africa-BB-Maps – Data Roles

	Responsibilities	Actors
<div><div><b>Data Provider</b></div><div>Institution or entity that generate or submit raw or processed datasets.</div></div>	<ul style="list-style-type: none"><li>• Provide data</li><li>• Submit data according to the defined schema and frequency</li><li>• Respond to data queries or corrections</li></ul>	
<div><div><b>Data Custodian</b></div><div>Institution or entity responsible for hosting and securing the data</div></div>	<ul style="list-style-type: none"><li>• Host and secure data</li><li>• Operate and maintain the enterprise GIS system or geoportal</li><li>• Coordinate with national stakeholders for border or regional datasets</li></ul>	
<div><div><b>Data Steward</b></div><div>Institution or entity responsible for maintaining data quality and standards</div></div>	<ul style="list-style-type: none"><li>• Maintain data quality</li><li>• Ensure datasets are up to date and aligned with defined metadata standards</li><li>• Validate data before publication or integration</li></ul>	

# Africa-BB-Maps – Data Roles

## Data Owner

Institution or entity with ultimate authority and accountability over a dataset.

## Data Consumer

Individuals or institutions who use data for decision-making or advocacy.

Responsibilities	Actors
<ul style="list-style-type: none"><li>• Govern data</li><li>• Define the purpose and usage rules for data</li><li>• Approve data access and sharing policies</li><li>• Ensure legal compliance</li></ul>	
<ul style="list-style-type: none"><li>• Drive impact</li><li>• Use the broadband mapping platform for evidence-based decisions</li><li>• Provide feedback on usability and accuracy</li><li>• Promote transparency</li></ul>	

# Africa-BB-Maps – Policy Roles

## Policy & Regulatory Oversight

Institutions or entities providing national policy direction and ensuring alignment with legal and regional frameworks.

Responsibilities	Actors
<ul style="list-style-type: none"><li>• Ensures alignment</li><li>• Integrate broadband mapping outputs into national digital strategies and policies</li></ul>	

# Africa-BB-Maps – Capacity Development Roles

## Training Provider

Institutions responsible for capacity-building and skills development.

Responsibilities	Actors
<ul style="list-style-type: none"><li>• Support national capacity-building strategies</li><li>• Localise ITU Academy content for national relevance</li></ul>	

# Africa-BB-Maps – Other Roles

Responsibilities		Actors
<div>Other</div> <div>...</div> <div><ul style="list-style-type: none"><li>• ...</li><li>• ...</li><li>• ...</li></ul></div>		
<div>Other</div> <div>...</div> <div><ul style="list-style-type: none"><li>• ...</li><li>• ...</li></ul></div>		
<div>Other</div> <div>...</div> <div><ul style="list-style-type: none"><li>• ...</li><li>• ...</li><li>• ...</li></ul></div>		

# Africa-BB-Maps – NCC's Orchestrating Role



# Thank You!





# Q&A and Discussion for Session 9

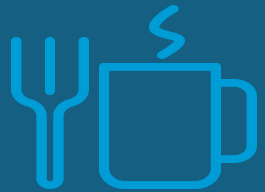
Estimated end time: 15:30





# Coffee Break

15:30 – 15:45



# SESSION 10: National Capacity Development – Roadmap for Nigeria



# SESSION 10: National Capacity Development Roadmap

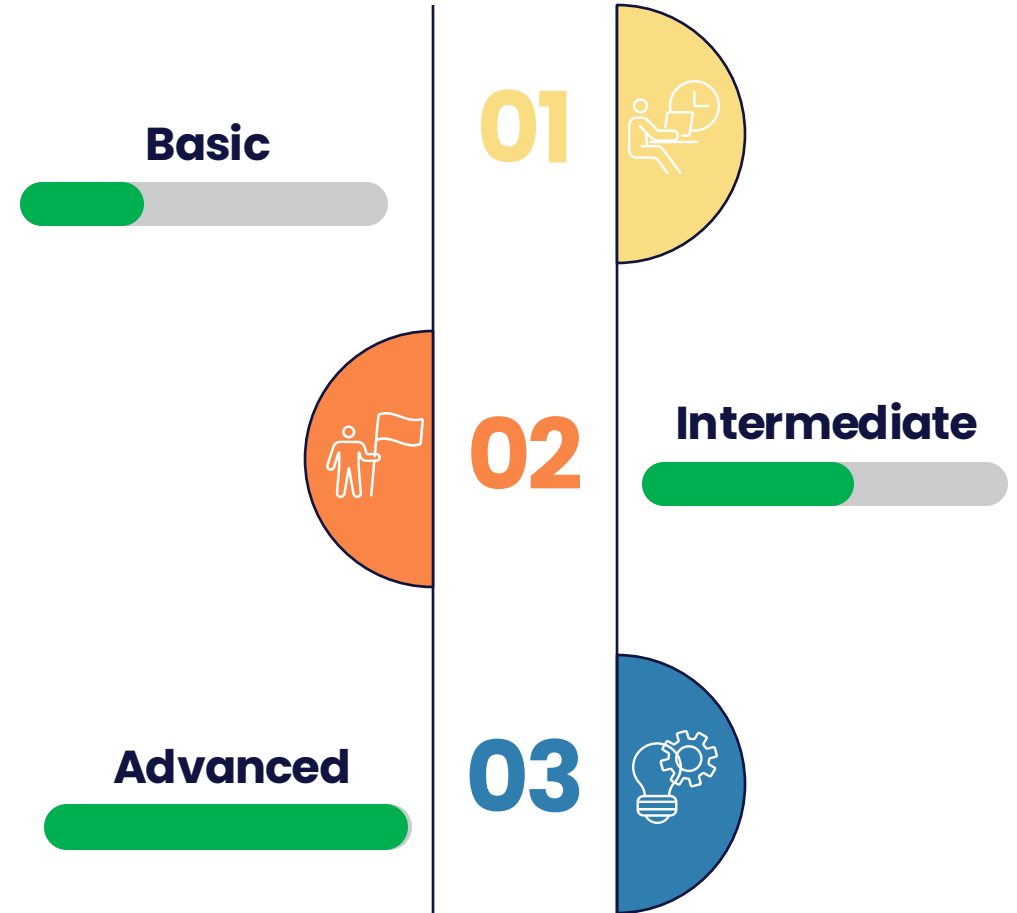


**Dana Jon Kamason**

Project Manager, Africa-BB-Maps, ITU



# Africa-BB-Maps – Capacity Development Roadmap for Nigeria



# Africa-BB-Maps – Capacity Development Delivery Platform



**ITU Academy**  
Empowering minds

About Courses

What do you want to learn?

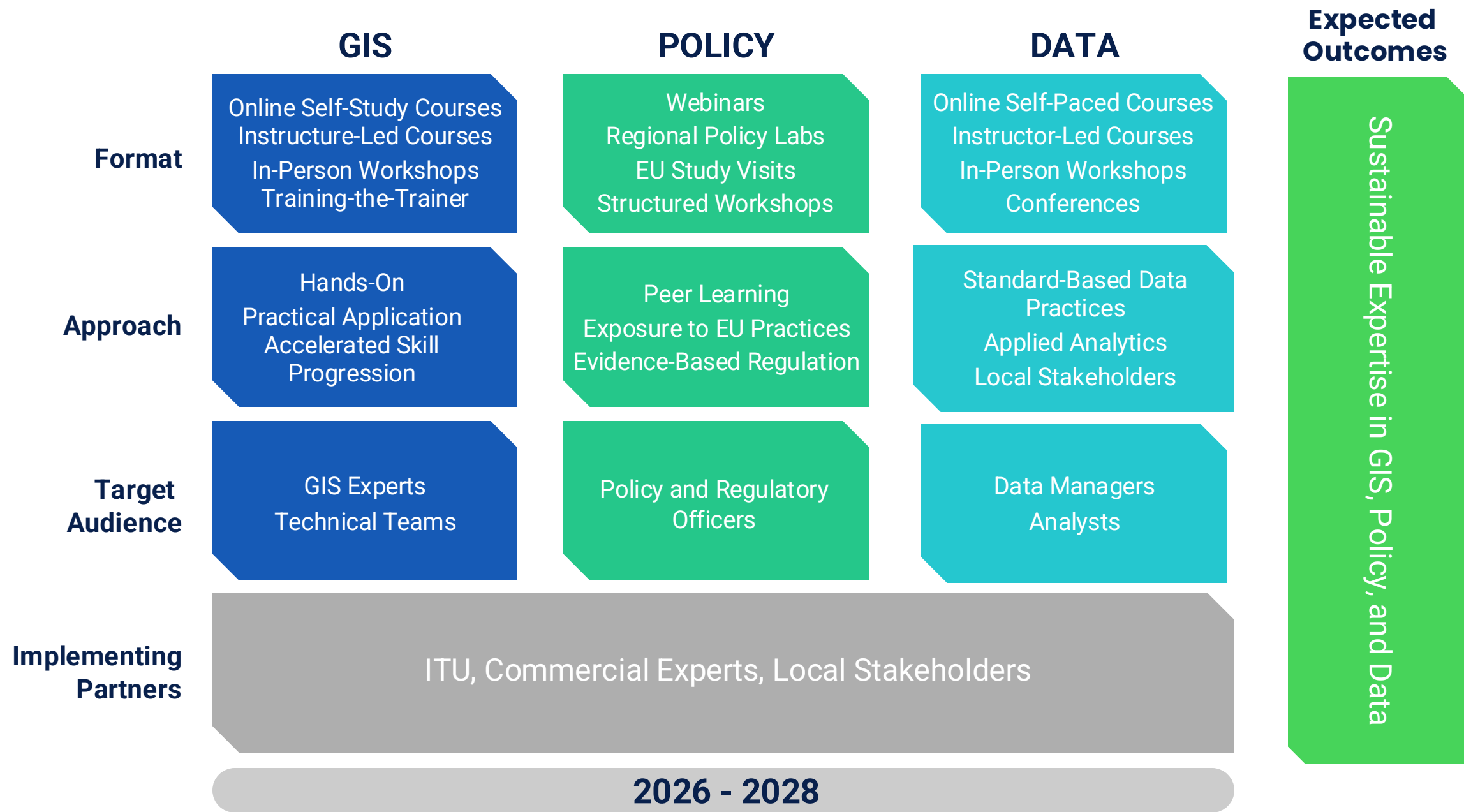
Explore our work

**Welcome to the ITU Academy**  
The International Telecommunication Union (ITU) gateway for capacity development.

<https://academy.itu.int/>



# Africa-BB-Maps – Capacity Development Framework (2026-2028)





# Thank You!



# Closing Ceremony

