

# Day 3

Stakeholder Coordination and Roadmap Development



BOCRA



# RECAP of Day 2 and Objectives of Day 3



# Coffee Break



# SESSION 8: Effective Coordination for Broadband – Cross-Sector Synergies, Data Sharing & Protection

Moderation: BOCRA



BOCRA



# SESSION 8: Effective Coordination for Broadband – Cross-Sector Synergies, Data Sharing & Protection



**Maitseo Rutladi**  
BOCRA



**Mr Keikonetusre**  
BPC



**Mr. Mootsumi**  
Department of Maps and  
Survey



**Mr Kenosi**  
Orange

# SESSION 9: Finalization of the Stakeholder Mapping – Roles & Responsibilities

Moderation: Mr. Dana Jon Kamason, Project Manager, Africa-BB-Maps, ITU



# Africa-BB-Maps – GIS/Broadband Mapping Roles

## Primary Custodian & Operation Lead

Institution or entity accountable for the full operation, maintenance, and upgrade of the national broadband mapping platform.

Responsibilities	Actors
<ul style="list-style-type: none"><li>• Ensure Continuity</li><li>• Host and maintain broadband mapping system</li><li>• Enforce data reporting obligations from data contributors</li><li>• Coordinate with other national stakeholders on data sharing and governance</li></ul>	

# Africa-BB-Maps – Data Roles

	Responsibilities	Actors
<div><div><b>Data Provider</b></div><div>Institution or entity that generate or submit raw or processed datasets.</div></div>	<ul style="list-style-type: none"><li>• Provide data</li><li>• Submit data according to the defined schema and frequency</li><li>• Respond to data queries or corrections</li></ul>	
<div><div><b>Data Custodian</b></div><div>Institution or entity responsible for hosting and securing the data</div></div>	<ul style="list-style-type: none"><li>• Host and secure data</li><li>• Operate and maintain the enterprise GIS system or geoportal</li><li>• Coordinate with national stakeholders for border or regional datasets</li></ul>	
<div><div><b>Data Steward</b></div><div>Institution or entity responsible for maintaining data quality and standards</div></div>	<ul style="list-style-type: none"><li>• Maintain data quality</li><li>• Ensure datasets are up to date and aligned with defined metadata standards</li><li>• Validate data before publication or integration</li></ul>	



# Africa-BB-Maps – Data Roles

**Data Owner**

Institution or entity with ultimate authority and accountability over a dataset.

**Data Consumer**

Individuals or institutions who use data for decision-making or advocacy.

Responsibilities	Actors
<ul style="list-style-type: none"><li>• Govern data</li><li>• Define the purpose and usage rules for data</li><li>• Approve data access and sharing policies</li><li>• Ensure legal compliance</li></ul>	
<ul style="list-style-type: none"><li>• Drive impact</li><li>• Use the broadband mapping platform for evidence-based decisions</li><li>• Provide feedback on usability and accuracy</li><li>• Promote transparency</li></ul>	

# Africa-BB-Maps – Policy Roles

**Policy & Regulatory Oversight**

Institutions or entities providing national policy direction and ensuring alignment with legal and regional frameworks.

Responsibilities	Actors
<ul style="list-style-type: none"><li>• Ensures alignment</li><li>• Integrate broadband mapping outputs into national digital strategies and policies</li></ul>	

# Africa-BB-Maps – Capacity Development Roles

## Training Provider

Institutions responsible for capacity-building and skills development.

### Responsibilities

- Support national capacity-building strategies
- Localise ITU Academy content for national relevance

### Actors

# Africa-BB-Maps – Other Roles

	Responsibilities	Actors
<div>Other</div> <div>...</div>	<div><ul style="list-style-type: none"><li>• ...</li><li>• ...</li><li>• ...</li></ul></div>	
<div>Other</div> <div>...</div>	<div><ul style="list-style-type: none"><li>• ...</li><li>• ...</li></ul></div>	
<div>Other</div> <div>...</div>	<div><ul style="list-style-type: none"><li>• ...</li><li>• ...</li><li>• ...</li></ul></div>	

# SESSION 10: National Roadmap – Final Timeline, Training Program & Next Steps

Moderation: Mr. Dana Jon Kamason, Project Manager, Africa-BB-Maps, ITU



BOCRA

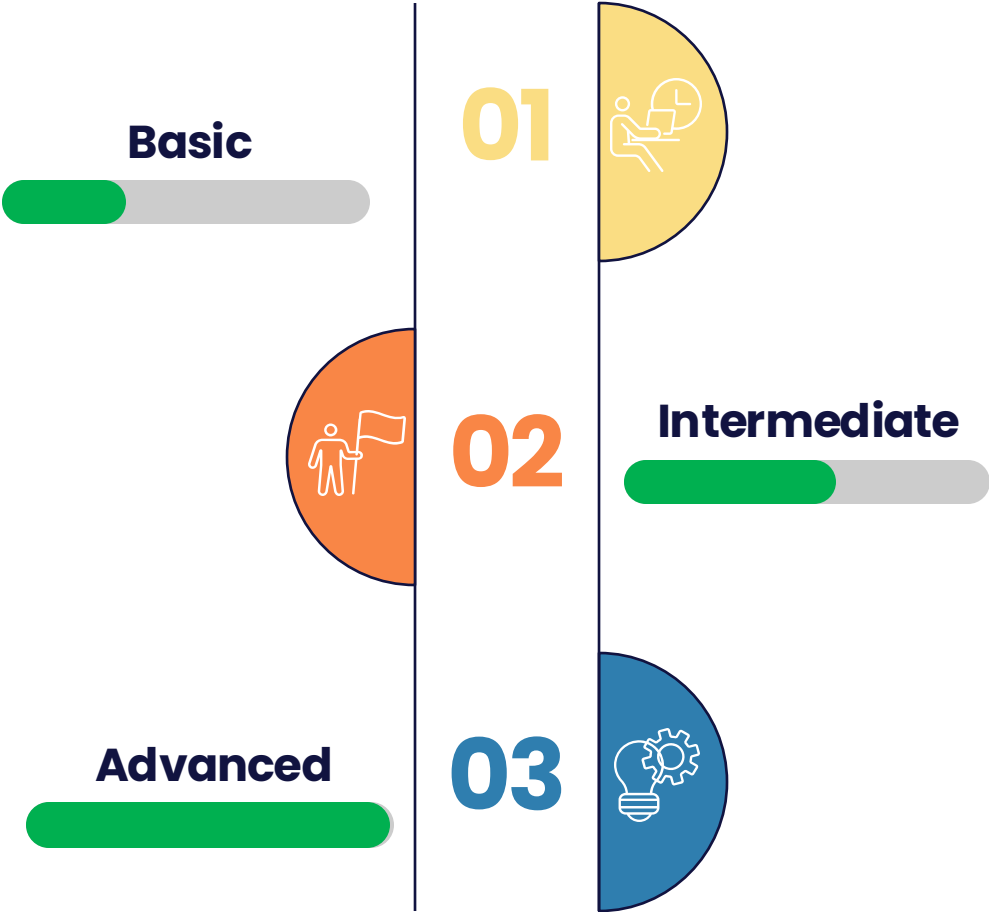
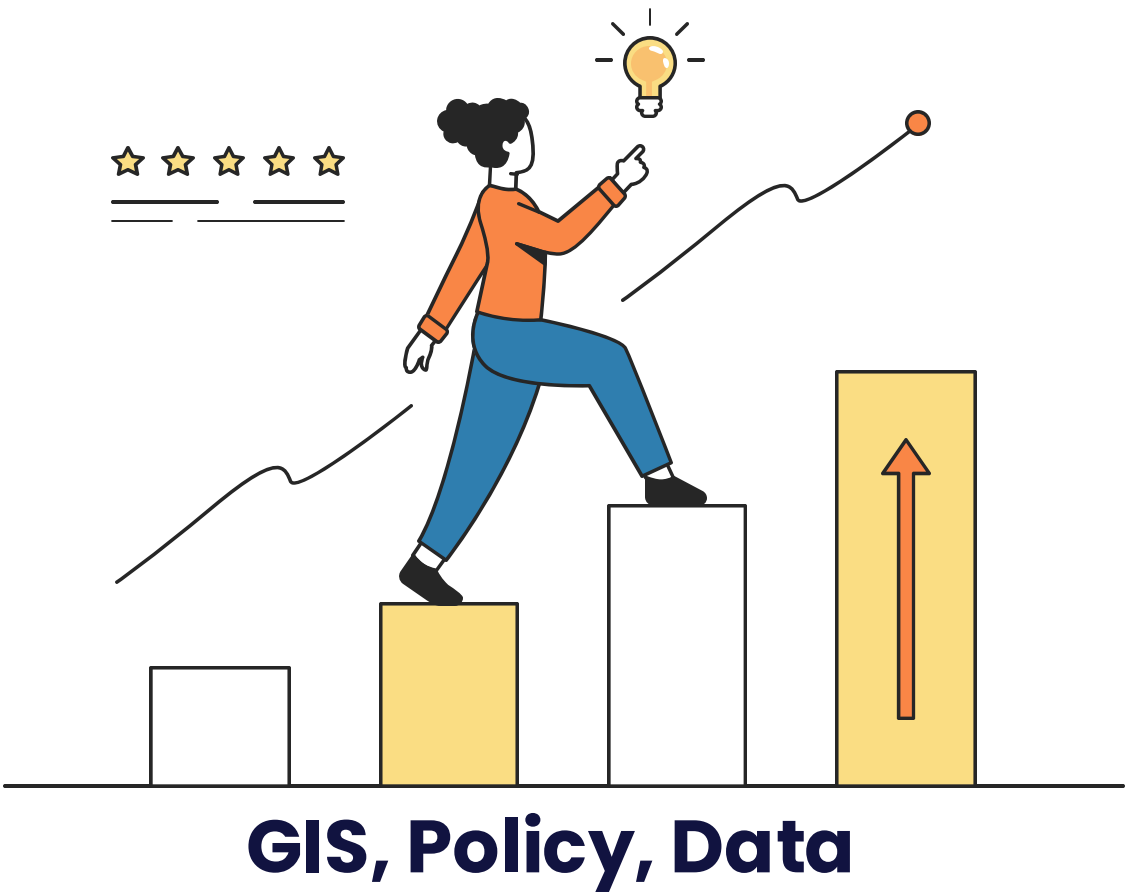


# Africa-BB-Maps – BOCRA's Orchestrating Role



**BOCRA**

# Africa-BB-Maps – Capacity Development Roadmap for Botswana





# Africa-BB-Maps – Capacity Development Delivery Platform



About

Courses



## Welcome to the ITU Academy

The International Telecommunication Union (ITU) gateway for capacity development.

What do you want to learn?



Explore our work

<https://academy.itu.int/>

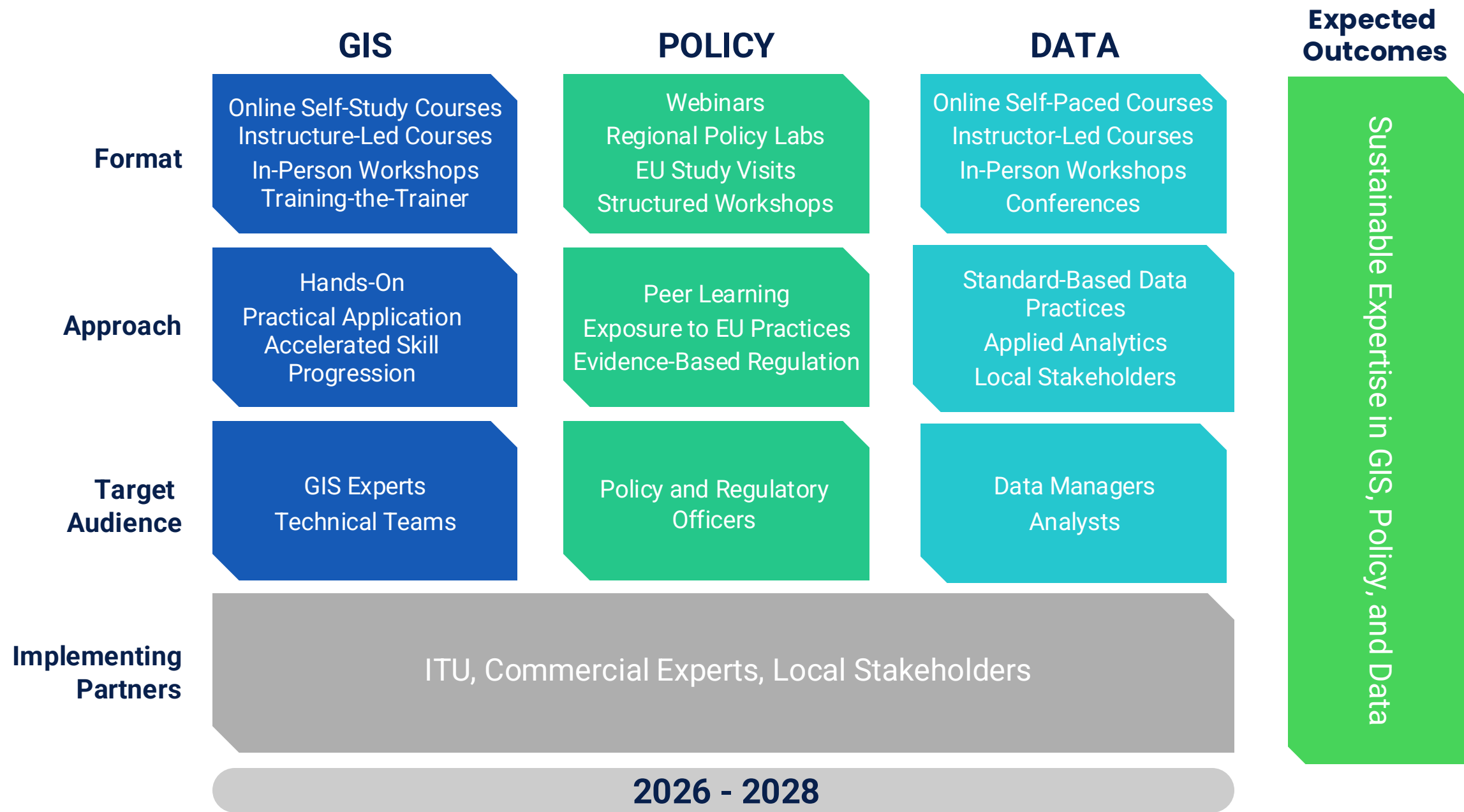


BOCRA





# Africa-BB-Maps – Capacity Development Framework (2026-2028)



# Closing Ceremony

